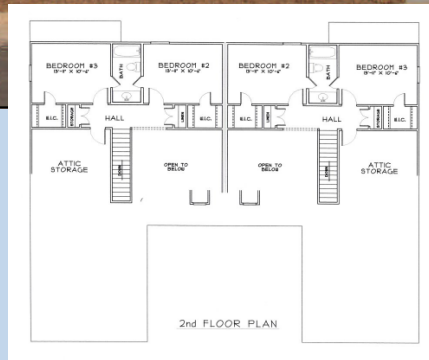
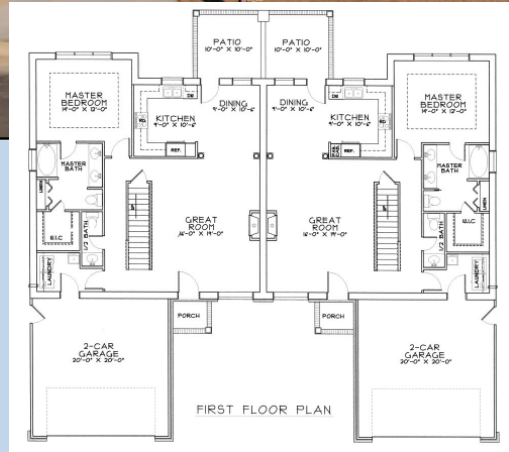


The Villas at Cobblestone -Lot 91 -B

\$179,900



UPSCALE,
ATTACHED
PATIO-HOMES. COMPARE
TO SINGLE FAMILY HOMES &
YOU'LL BE AMAZED AT THE
QUALITY AND VALUE



- ◆ Three Bedrooms
- ◆ Two & 1/2 Bathrooms
- ◆ E-300 Rated
- ◆ Approximately 1700 HSF
- ◆ Two Car Garage w/Opener
- ◆ Tons of Storage Space
- ◆ Tiled Floors in Bathrooms
- ◆ Low-e Double Hung Windows
- ◆ Fireplace w/ Gas Logs
- ◆ **MLS # 82582**

2133-B Remington Ct. | Greenville | NC | 27834

Do you want the safest, strongest, quietest, most energy efficient home available? This is a **LOGIX™ HIGH PERFORMANCE WALL SYSTEM** home with 6 1/4" of solid poured concrete between homes. It is a very bright and open plan with plenty of natural light, ceramic tile, and two car garage **Save \$\$\$** on your utility bills and home maintenance in this great design with master bedroom down and nice corner lot!

WHAT DOES "ICF" MEAN? Learn all about it at ncicf.com



Dan Thomas — Realtor / Broker

Dan Thomas Realty

"NO NONSENSE" REAL ESTATE

589 Alma Drive
Winterville, NC 28590

danthomasrealty.com
ncicf.com

Phone: 252-355-3755
Fax: 252-355-3755
E-mail: dan@danthomasbuilders.com

